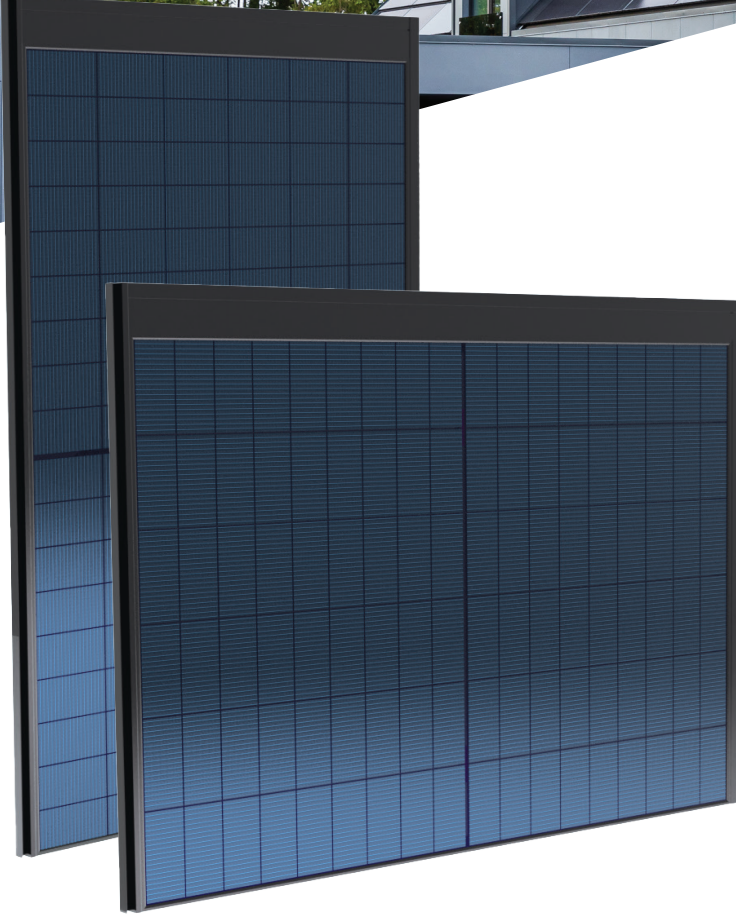


Solar Full Roof™

BIPV-panel

420W-430W FRS/SND EU-G2.5-35X35 N-TYPE GLASS/GLASS



2-IN-1 ROOFING MATERIAL

Solar Full Roof is a modern 2-in-1 roofing material that integrates solar technology into any building's roof, reducing both material and labor costs.



QUICK & EASY INSTALLATION

The entire system is quick and easy to install - making the process straightforward and efficient. A typical installation work on roof will take only a few days.



WEATHERPROOF

Our products are rigorously tested and safe, designed to be weatherproof against snow, ice, hail, and wind under normal conditions.



ELEGANT & BEAUTIFUL

A solar roof that adds to your home's design and aligns perfectly with your architect's vision.



INCREASED PROPERTY VALUE

Real estate experts confirm that a solar roof can significantly increase a property's market value.

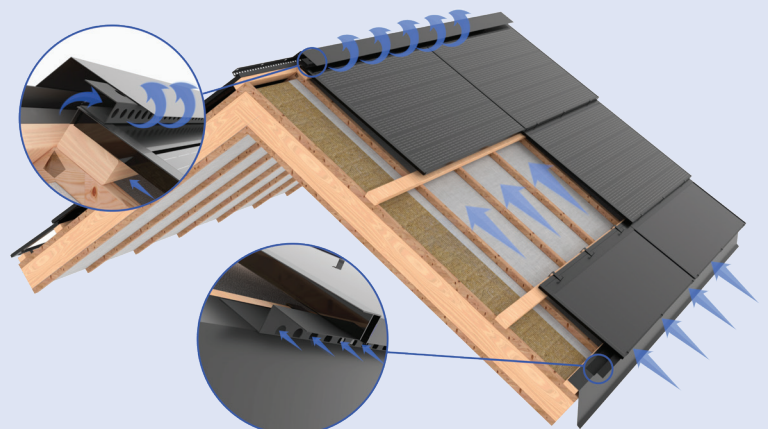


WARRANTY

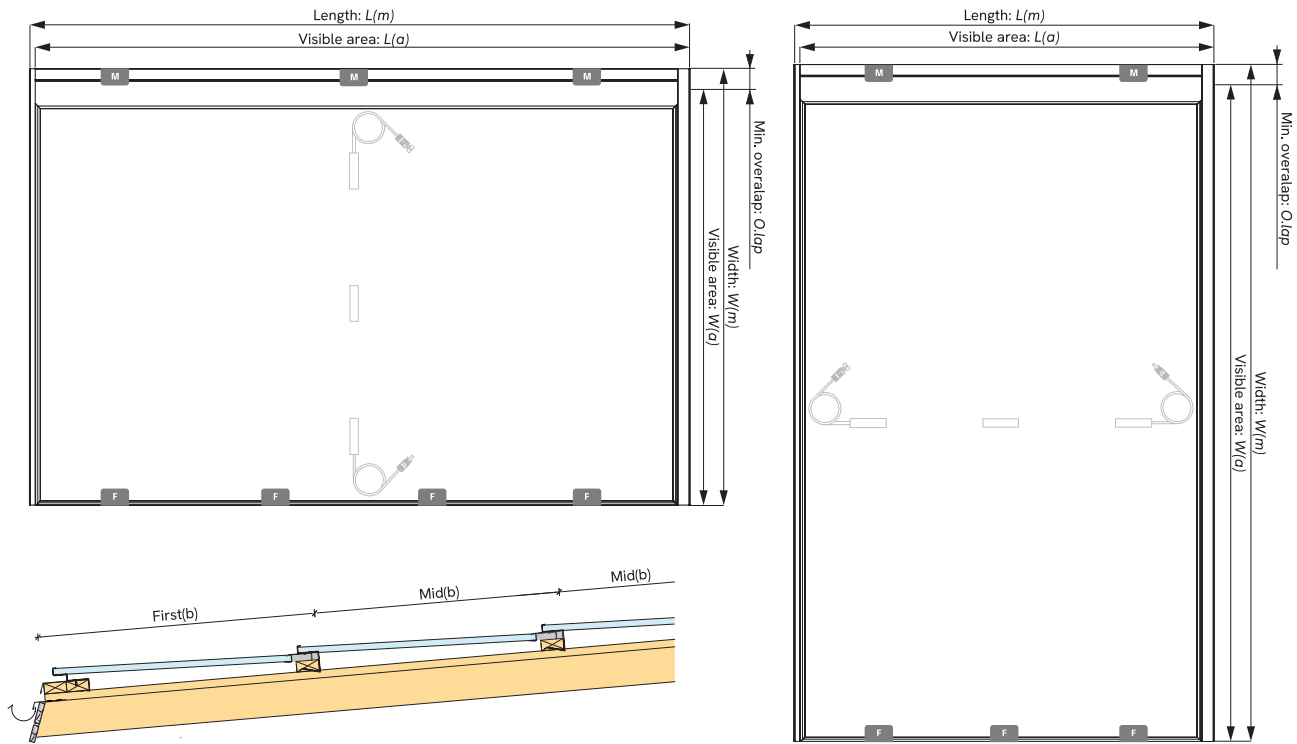
30-year performance warranty and 15-year product warranty for your peace of mind.

DESIGNED TO LAST

Solarstone's globally patented Click-On system creates a ventilation gap between the solar panels and roof structure, promoting airflow at the ridge and eaves. This design prevents moisture buildup, extends the roof's lifespan, and enhances solar energy production on sunny days.



Product datasheet



Electrical characteristics

Rated Power Pmax:	420 W	425 W	430 W
Visible Area Power:	~190W to ~215W/m ²		
Open Circuit Voltage (VoC):	38.06 V	38.25 V	38.44 V
Short Circuit Voltage (Isc):	14.09 A	14.17 A	14.25 A
Max. Power Voltage (Vmpp):	31.49 V	31.67 V	31.86 V
Max. Power Current (Impp):	13.34 A	13.42 A	13.50 A
Module Efficiency:	21.5 %	21.8 %	22.0 %
Max. Reverse Current (IR):	30 A		
Max. System Voltage:	1500 V		
Annual Degradation:	0.40 %		
Temperature Range:	-40°C to +85°C		
Snow Load:	5400 Pa (~550 kg/m ²)		
Wind Load:	2400 Pa (~224 kg/m ²)		
Certifications:	EN-61215, EN-61730, BROOF (t2)		

Measurements & batten steps

Variation	L(m)	W(m)	L(a)	W(a)
Landscape KIT-A	1791	1195	1754	1140
Portrait KIT-A	1203	1783	1166	1730
Landscape KIT-B	1791	1245	1754	1170
Portrait KIT-B	1203	1833	1166	1760
Landscape KIT-C	1791	1295	1754	1220
Portrait KIT-C	1203	1883	1166	1810
Variation	O.lap	First(b)	Mid(b)	
Landscape KIT-A	55	1170	1140	
Portrait KIT-A	53	1760	1730	
Landscape KIT-B	75	1200	1170	
Portrait KIT-B	73	1790	1760	
Landscape KIT-C	75	1255	1220	
Portrait KIT-C	73	1845	1810	

BIPV-panel specification

PV-Module:	FuturaSun Silk® Nova Duetto All Black 420-430W
Cells:	108 monocrystalline half-cut MBB n-type bifacial cells 182 x 91 mm
Glass:	Front - 2.0 mm solar glass with ARC, Back - 2.0 mm heat strengthened glass
Frame:	Black anodized aluminum frame on PV-module and BIPV-panel
Junction Box:	Certified according to IEC 62790, IP 68 approved, 3 bypass diodes
Cables & Connector:	Solar cable, length 1100 mm; MC4 Connector (Xtong Tech, PV-XT101.2)
Weight:	25kg - 32kg, depends on Click-On frame. Approx 16kg/m ²
BIPV-panel frame:	Solarstone Click-On EU-G2.5-35x35, Color: RAL9005
Warranty:	25-year performance warranty and 10-year product warranty
Underlayment:	Underneath PV-panel type, watertight, UV-resistant, temp. range: -40°C to +120°C e.g. Riwega USB Protector Head FH 240 or Isola Iso-D Xtra Nordic, or any that conforms to EN:13859-1:2014
Inverter:	Only inverters with Arc-Fault Circuit Interrupter (AFCI)
Other information:	For design, install & maintenance information, please visit solarstone.com/toolbox