

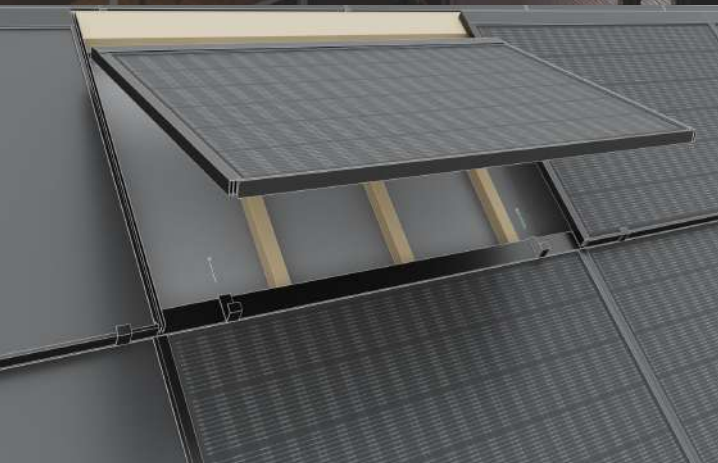
TECHNICAL SPECIFICATIONS

Full Roof BIPV System with Click-on Framing

Simple, aesthetic, lightweight and cost-effective.

Durable building-integrated rooftop solar modules replacing traditional roofing.

Standard size PV panels and aluminium composite panels (ACP) converted into waterproof roofing system.

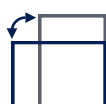


APPLICATION

- New-builds & renovation projects
- Residential and public buildings
- Production & ancilliary facilities
- Carports
- Facades

ADVANTAGES

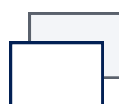
- 2-in-1 PV system for portrait & landscape installations
- Passive dummy modules for roof perimeter & obstacles
- Frame compatibility with most popular Tier 1 PV panels
- Easy onsite assembly & installation



Portrait Landscape



Passive Active



Eco Premium



COMPONENTS

Starter 1st Row Clamp



Regular Clamps



Top Profile

3 different combinations (ABC) to match roof dimensions



Left Profile



Right Profile



Barge, Valley, Ridge, Transition flashings



Ventilation profile



NON-ACTIVE MODULES

Size	1220x2440mm or custom sizes
Safety	Fireproof, electrostatic proof
Weight	7.8 kg/m ²
Features	Water-, fire- and electrostatic proof, anticorrosive
Lacquering	Coil Coating, Fluorocarbon based (e.g. PVDF)
Total thickness	30mm
Temp resistance	-40 to +80 °C
Thermal conductivity	λ3
Temper of aluminum layers	Peraluman alloy (AlMg) H42 acc. EN 573-3
Tensile strength of aluminum	≥ 125 N/mm ²



CALCULATOR

Designed for BIPV



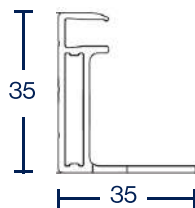
Online tool helps automate layout generation and facilitates dimensioning of utility patented Solarstone PV systems. Ask sales representative for access.

solarstone.ee/en/calculator

COMPATIBILITY

Tier 1 players

Click-on profiles are compatible with Tier 1 modules, which are manufactured with the following frame configurations



(L x H)
30x35mm
35x35mm
35x40mm

Profiles can be fitted on-site to active PV and prefabricated passive aluminium composite (ACP) modules. No adhesive or screws required.

MATERIALS

100% Recyclable

- Stainless steel painted clamps
- Painted and anodized aluminium profiles EN AW 6060F22 T6
- Top seal profile is extruded of recycled plastic material
- No waste in production line. No waste at the end of the product life



KIT TESTS & CERTIFICATION

Wind, Snow, Fire, Roofing

- Electrical: IEC 61215 & 61730*
- Wind: EN 14437:2004
- Fire: Broof (t2)
- Snow load: 5400pa



* Solarstone recommends using Click-on only with certified modules

KIT SPECIFICATIONS

Kit fit	60/120 & 72/144 cell modules
Kit weight	2,8 kg (L size 1,6m ² module in landscape)
Warranty	10-year product & 25-year power output
Roof pitch	18-90°. <18° with full waterproof underlay
Temperature range	-30°C to 100°C
Compatible roof windows	Velux, Roto, Keylite, Fakro
Compatible roof materials	Concrete tile, metal, cement, slate, shingle